



Just for Fun

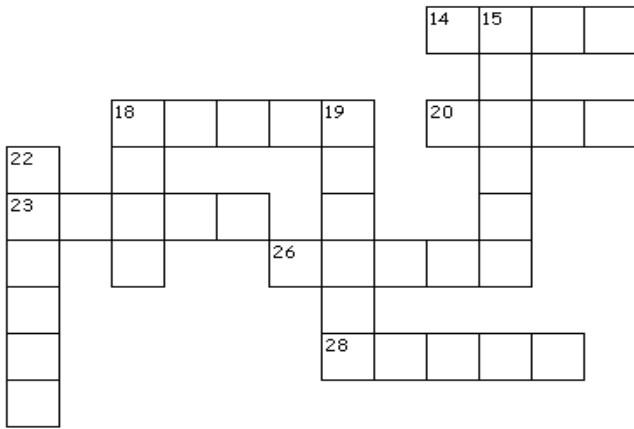
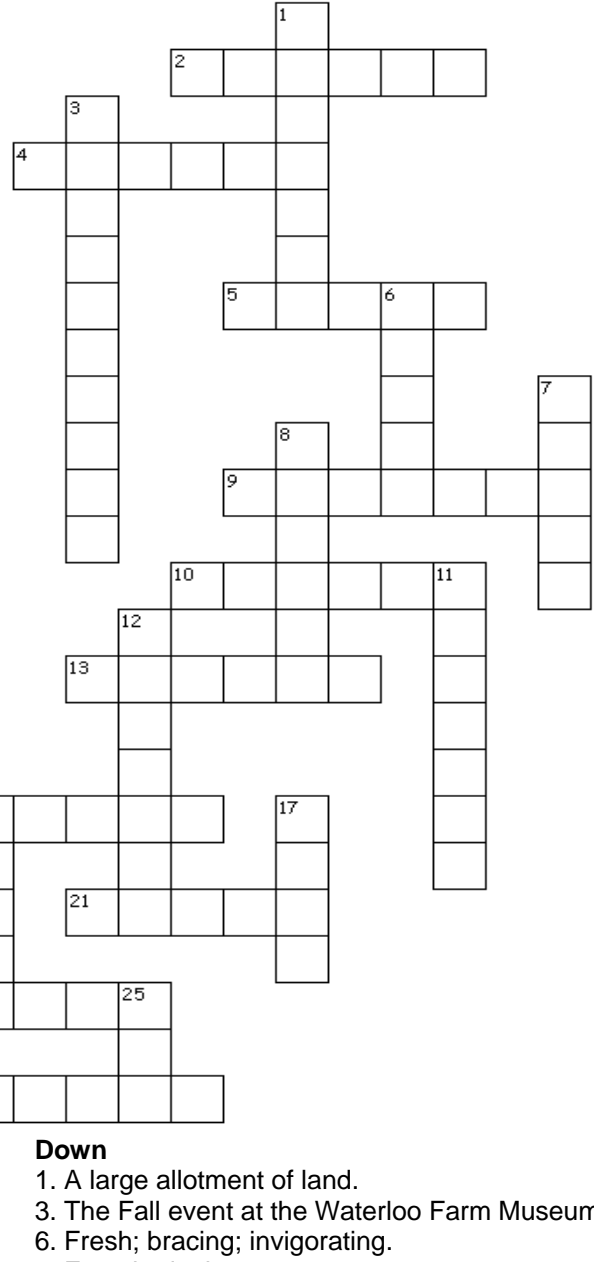


Harvest Time Crossword

Fill in the correct answers, one letter per square, both across and down, from the given clues. You will find the solution on the reverse side of this page.

Across

2. Container used to carry water, sand, fruit, etc.
4. Curved implement used for cutting grass, wheat, or hay.
5. A barrier used to keep animals in.
9. Large orange fruit that is good in pies.
10. Sweet fruit of the gourd family.
13. Small, hard seeds of a food plant such as wheat, corn, rye, oats, rice, or millet.
14. An agricultural implement used for cutting, lifting, turning over, and partly pulverizing soil.
16. Removing wool from sheep.
18. Pressed from sweet apples; also called applejack.
20. A person who cultivates the land.
21. The part of a female cow that produces milk.
23. What the farmers plant.
24. Raised for bacon, ham, pork, etc.
26. They do a great migration before winter.
27. The fatty portion of milk after it has been churned.
28. Its dried shell is used for bowls and utensils.

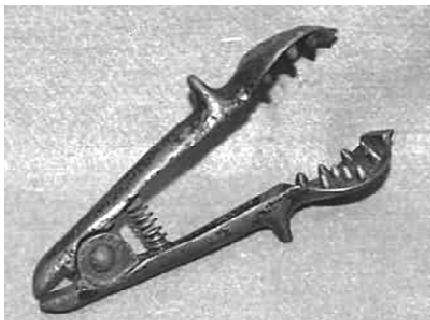


Down

1. A large allotment of land.
3. The Fall event at the Waterloo Farm Museum.
6. Fresh; bracing; invigorating.
7. Female donkey.
8. The season of changing colors.
11. To reap the summers crop.
12. Many trees that bear fruit.
15. What falls from trees in yellow, orange, and red.
16. Stalk that is left when the wheat is removed.
17. Best off the cob.
18. Home for chickens.
19. Action used in the gathering of leaves.
22. The seeds of the Oak tree.
25. Female sheep.
27. Gathering and bundling of hay.

What's It ?

Do you know what this item is? Look on the reverse side of this page for the answer.



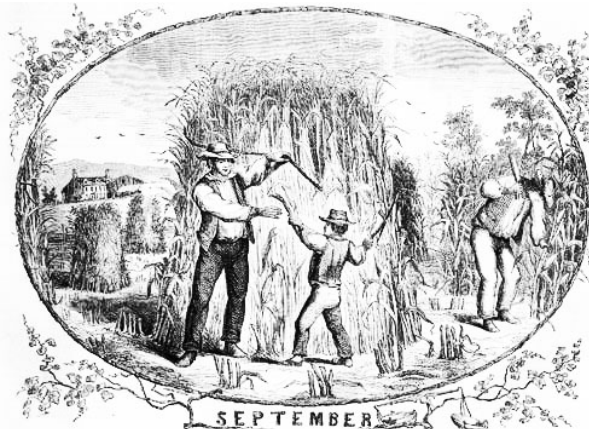
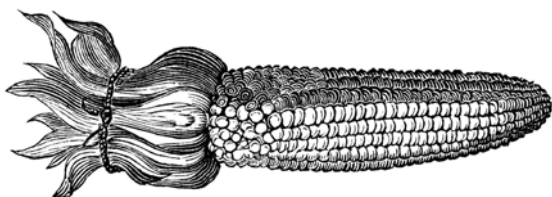


Just for Fun



What's It? Answer

Corn Sheller This is a version of a cast iron hand-held corn sheller that dates from the last quarter of the 19th century. This style sheller was used to separate seed corn from the cob to be used for next year's crop. The larger table mount or box shellers that you often see were typically used for feed purposes, while these handheld versions had the much more important job on the early farmstead of giving the farmer more control so that only the choicest kernels were saved for seed stock for following year. The idea with this one was that you squeezed the handle more or less as the cob changed size, thus enabling you to pick and choose which kernels you saved into the seed bucket for next years use.



Late September

by Amy Lowell

Tang of fruitage in the air;
 Red boughs bursting everywhere;
 Shimmering of seeded grass;
 Hooded gentians all a'mass.
 Warmth of earth, and cloudless wind
 Tearing off the husky rind,
 Blowing feathered seeds to fall
 By the sun-baked, sheltering wall.
 Beech trees in a golden haze;
 Hardy sumachs all ablaze,
 Glowing through the silver birches.
 How that pine tree shouts and lurches!
 From the sunny door-jamb high,
 Swings the shell of a butterfly.
 Scrape of insect violins
 Through the stubble shrilly dins.
 Every blade's a minaret
 Where a small muezzin's set,
 Loudly calling us to pray
 At the miracle of day.
 Then the purple-lidded night
 Westering comes, her footsteps light
 Guided by the radiant boon
 Of a sickle-shaped new moon.

Crossword Puzzle Answers

Across	Down
2 Bucket	1 Acreage
4 Sickle	3 Pioneer Day
5 Fence	6 Crisp
9 Pumpkin	7 Jenny
10 Squash	8 Autumn
13 Grains	11 Harvest
14 Plow	12 Orchard
16 Shear	15 Leaves
18 Cider	16 Straw
20 Farmer	17 Corn
21 Udder	18 Coop
23 Crops	19 Raking
24 Swine	22 Acorns
26 Birds	25 Ewe
27 Butter	27 Bale
28 Gourd	



CIDER CAKE

One cup sugar, half a cup of butter, one egg well beaten, one large cup of cider, one teaspoonful of soda, flour sufficient to make it as thick as pound cake. One cup of raisins can be added if desired.

IN THESE DAYS

In these days of uncertain waist-line, it is as difficult for a woman to tell how high up on her back to pin her skirt, as for a bald-headed man to know where to stop washing his face.